

**CUKUROVAISI**  
[www.cukurovaisi.com](http://www.cukurovaisi.com)





**GOLDSUN**  
— elite



**GOLDSUN**  
— performa



**GOLDSUN**  
— cc



**GOLDSUN**  
*elite*



**GOLDSUN**  
*performa*



**GOLDSUN**  
*cc*

### Three-Stage Heating System:

Goldsun Ceramic Plaque heaters provide the required level of comfort with their three-stage heating system. Depending on the weather conditions, it is possible to switch between high, medium or low level of heating.

### Easy-to-use Installation Bracket:

The devices can easily be installed on a wide variety of surfaces, thanks to the multipurpose installation bracket provided with the heaters.

### Remote Control:

All heaters are equipped with a radio frequency receiver to be remotely controlled. Up to 15 heaters can be controlled with a single remote-control hand device.



### Aesthetic and Practical Design:

Designed to be used in high end cafes and restaurants, Goldsun heaters have aesthetic looks and practical design. The body of the heater covers all gas and electrical connections avoiding eyesore for architecture.



### Heat Deflector:

The heat deflector is mounted on the heaters to dissipate the fumes coming out of the heater. If the heaters are installed close to the top, the deflector will prevent the above material (tent, pergola, gypsum, etc) from harm.

### Ceramic Plaques Made in Germany:

High efficient, patented ceramic tiles which are made in Germany are used in Goldsun Ceramic Plaque heaters. Besides the heat regain grid in front of the tiles increases the efficiency by %20, it also increases the wind resistance considerably.



### Reflector:

Specially designed reflector is another feature that improves the efficiency of Goldsun Ceramic Plaque heaters, helping the radiant energy to be focused and directed towards the customers rather than into the air. This feature differentiates Goldsun Plaque Heaters from many other products available in the market.







### Elite Series:

Elite is the top of the range among Goldsun Series of “high end heaters”. The ceramic glass shield of the heater provides high protection against wind and draught, besides the charming look. The glass is made of the highest quality ceramic based material with a thickness of only 3 mm giving maximum heat transparency. Designed to be used under windy conditions, all the Goldsun heaters have double flame rod feature to let the heater work safe and sound.

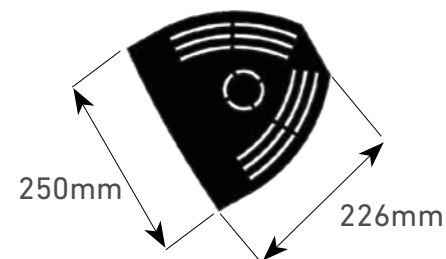
**GOLDSUN**  
— elite



14 KG



17 KG



Code	Capacity (kW)			Heat Covarage* (m <sup>2</sup> )	Natural Gas Consumption (m <sup>3</sup> /h)			Recommended Mounting Height (m)	Natural Gas Inlet Pressure (mbar)
	Low	Med	High		Low	Med	High		
ELT.5/6/7	5	6	7	10-30	0,52	0,63	0,73	2,0	18-55
ELT.7/9/11	7	9	11	24-50	0,73	0,94	1,15	2,2	18-55

\* These figures may vary depending on the conditions like indoor or outdoor usage, isolation status, wind etc.









### Performa Series:

Performa heaters are equipped with decorative grill for aesthetics and wind protection. The grill is made of ceramic coated steel that is very durable to work under high temperatures and harsh conditions. It is well protected against rust and corrosion.

Designed to be used under windy conditions all Goldsun heaters have double flame rod feature to let the heater work safe and sound.

**GOLDSUN**  
— *performa*



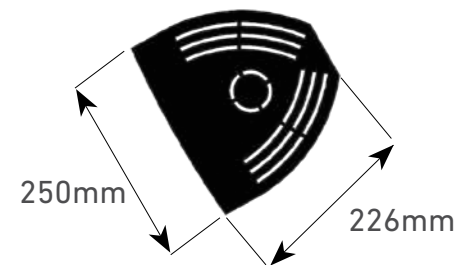
13 KG

710mm



16 KG

970mm



Code	Capacity (kW)			Heat Coverage* (m <sup>2</sup> )	Natural Gas Consumption (m <sup>3</sup> /h)			Recommended Mounting Height (m)	Natural Gas Inlet Pressure (mbar)
	Low	Med	High		Low	Med	High		
PRF.5/6/7	5	6	7	10-30	0,52	0,63	0,73	2,0	18-55
PRF.7/9/11	7	9	11	24-50	0,73	0,94	1,15	2,2	18-55

\* These figures may vary depending on the conditions like indoor or outdoor usage, isolation status, wind etc.









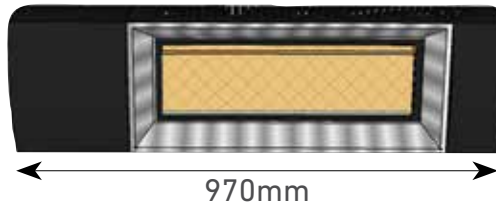
#### CC series:

CC heaters are the base version of the Goldsun heaters that combine performance to budget. It is designed for the customers who look for an economical solution but still want to have the benefits of the Goldsun heaters like high efficiency and high quality. Designed to be used under windy conditions all the Goldsun heaters have double flame rod feature to let the heater work safe and sound.

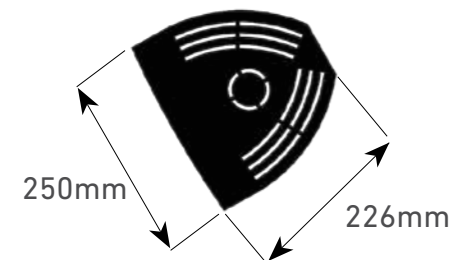
**GOLDSUN**  
CC



12 KG



15 KG



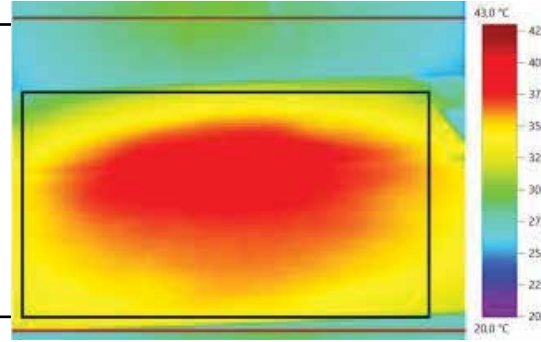
Code	Capacity (kW)			Heat Covarage* (m <sup>2</sup> )	Natural Gas Consumption (m <sup>3</sup> /h)			Recommended Mounting Height (m)	Natural Gas Inlet Pressure (mbar)
	Low	Med	High		Low	Med	High		
CC.5/6/7	5	6	7	10-30	0,52	0,63	0,73	2,0	18-55
CC.7/9/11	7	9	11	24-50	0,73	0,94	1,15	2,2	18-55

\* These figures may vary depending on the conditions like indoor or outdoor usage, isolation status, wind etc.

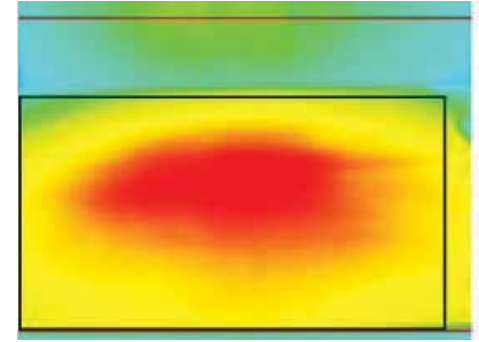


### High Energy Savings:

With the combination of all the features listed here, Goldsun Ceramic Plaque heaters provide high energy with less gas consumption. Images on the right show the comparison between the infrared camera thermal images of 11 kW Goldsun Heater to an 18 kW competitor. Tests were made under same conditions, both heaters were mounted 3 meters away from a black wall. The images show the results after 60 minutes.



11 kW'lık Goldsun Seramik Plakalı Isıtıcı



18 kW'lık Rakip Ürün





**Gebze Plastikçiler Organize Sanayi Bölgesi**  
Atatürk Bulvarı No:28 41400 Gebze / Kocaeli  
Tel +(90) 262 751 33 66 - Fax +(90) 262 751 33 88  
info@cukurovaisi.com